



# **G2 Goldfields**

**Drilling One Of The World's  
Highest Grade Gold Deposits**

---

**Corporate Presentation**

December 2024

---

TSX: GTWO

OTCQX: GUYGF

# Forward Looking Statements

This presentation contains certain forward-looking statements. wherever possible, words such as "may", "will", "should", "could", "expect", "plan", "intend", "anticipate", "believe", "estimate", "predict" or "potential" or the negative or other variations of these words, or similar words or phrases, have been used to identify these forward-looking statements. these statements reflect management's current beliefs and are based on information currently available to management as at the date hereof. forward-looking statements involve significant risk, uncertainties and assumptions. many factors could cause actual results, performance or achievements to differ materially from the results discussed or implied in the forward-looking statements. these factors should be considered carefully and readers should not place undue reliance on the forward-looking statements. although the forward-looking statements contained in this presentation are based upon what management believes to be reasonable assumptions, the company cannot assure readers that actual results will be consistent with these forward-looking statements. the company assumes no obligation to update or revise them to reflect new events or circumstances, except as required by law. Dan Noone, CEO and Director of G2 Goldfields Inc., is the qualified person, within the meaning of NI 43-101 and has reviewed the technical content of this presentation.



# Executive Summary

WHY  
G2?

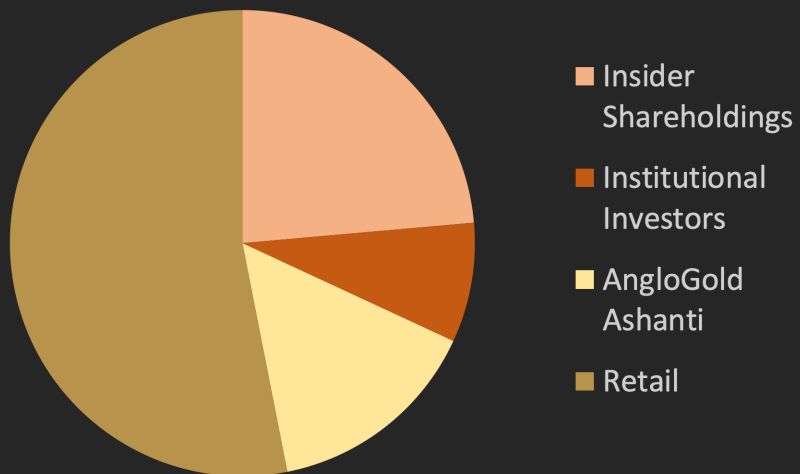
- ▶ **2 Million Oz. Resource** with updated MRE expected in Q1 of 2025
- ▶ **High Grade Deposit** averaging 9.03 g/t Au (Ind.) in OMZ Resource
- ▶ **OKO NW Discovery** (Nov 2023) +2.5 kilometres of mineralized strike
- ▶ **17-kilometre-long tend** with numerous active Greenfields targets
- ▶ **Premier jurisdiction** and exceptionally experienced management



# Company Overview

4

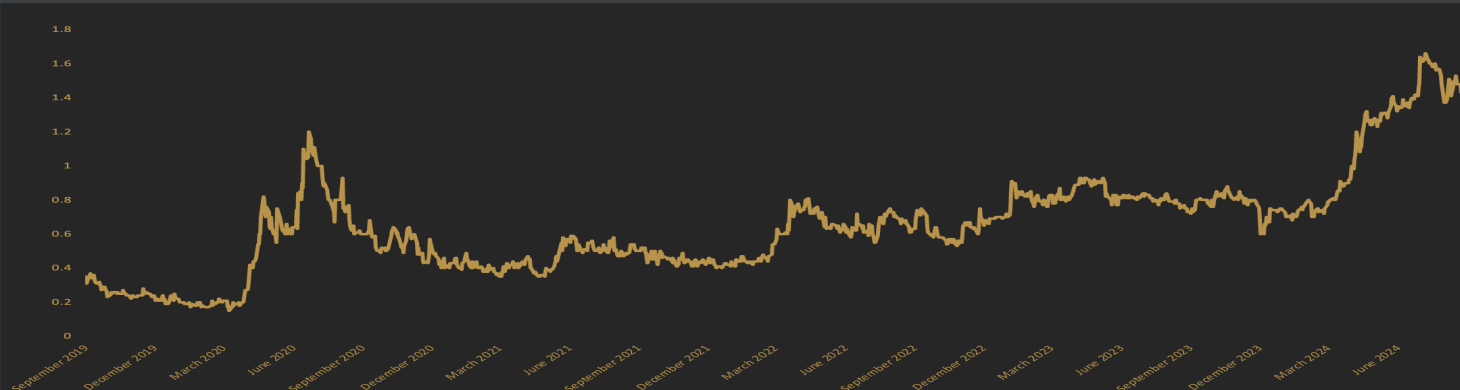
## Investor Profile



## Stock Profile

Common Shares Outstanding:	239,238,615
Insider Shareholding:	56,386,202
Shares Fully Diluted:	255,396,115
Cash Position:	43,200,000 CAD

## G2 Goldfields TSX 5-Year Trading History



## Oko Main Zone (OMZ) Resource

- ▶ 495,000 oz. Au – Inferred contained within 2,413,000 tonnes @ **6.38 g/t Au** (total OP + UG)
- ▶ 686,000 oz. Au – Indicated contained within 2,368,000 tonnes @ **9.03 g/t Au** (total OP + UG)
- ▶ Estimates gold content hosted by **three primary shear zones**
- ▶ Covers up to a **vertical depth of 500 metres**
- ▶ Reported at a **1.8 g/t gold cut-off**
- ▶ Remains **open**

## Ghanie Zone Resource

- ▶ 604,000 oz. Au – Inferred contained within 12,216,000 tonnes @ **1.54 g/t Au** (total OP + UG)
- ▶ 236,000 oz. Au – Indicated contained within 3,344,000 tonnes @ **2.20 g/t Au** (total OP + UG)
- ▶ **21,654 metres** drilled (Ghanie) since the previous Mineral Resource



# Record of success in Guyana

5

“... a significant underexplored region and one of the most prospective in the world for large scale gold discoveries.” Mark Bristow | Barrick Gold

Aurora, Guyana



**Executive Chairman**

## Patrick Sheridan

LSE-educated economist with 25+ years' experience in the Guiana Shield. Over \$400 million raised for exploration & development. Credited with finding, financing and developing the Aurora Mine (6.5 Moz). Involved in sales of Gold Eagle Mines (GEA.TO) & FNX Mining (FNX.TO).

Lihir, PNG



**CEO**

## Dan Noone

Over 30 years in the industry, taking projects from grassroots to feasibility and production (PNG, Guyana, Indonesia, Peru, Ecuador & Argentina). Previously VP Exploration (GUY.TO), V.P.Peru (AQL-TO) and President (ABS.V). Fellow of the Australian Institute of Geoscientists.

Saramacca, Suriname



**COO**

## Torben Michalsen

Extensive expertise in design optimisation, procurement, permitting and large-scale infrastructure projects (i.e. road access). Acquired in-country knowledge as former CGM Construction Manager (Toroparu) and IAMGOLD Construction Superintendent (Rosebel).

Karouni, Guyana



**VP Exploration**

## Boaz Wade

Former manager of the Aurora Gold Mine exploration geology team. Senior member of the team responsible for successfully reinterpreting mineralization controls at Aurora as well as remodeling the Kaoruni deposits (Troy Resources). BEng (Geological), University of Guyana.



# Guyana Economy Overview

6



- ▶ Guyana was the **world's fastest-growing economy in 2022**, achieving a real GDP growth rate of 62.4%, followed by 38% growth in 2023
- ▶ Continued strong economic forecasts looking into 2024 and 2025



- ▶ Massive offshore oil discoveries in 2015 have fueled this growth and established Guyana as **a key strategic oil producer for the West**
- ▶ Estimated 18.7 Billion barrels of oil equivalent

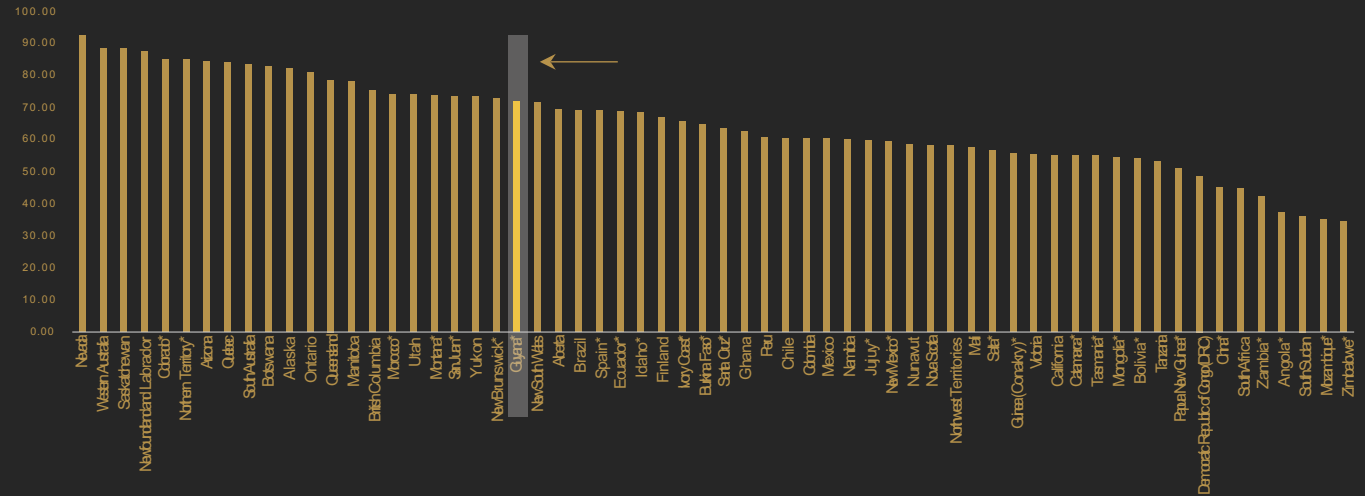


- ▶ English-speaking, British rule of law and British parliamentary system of government

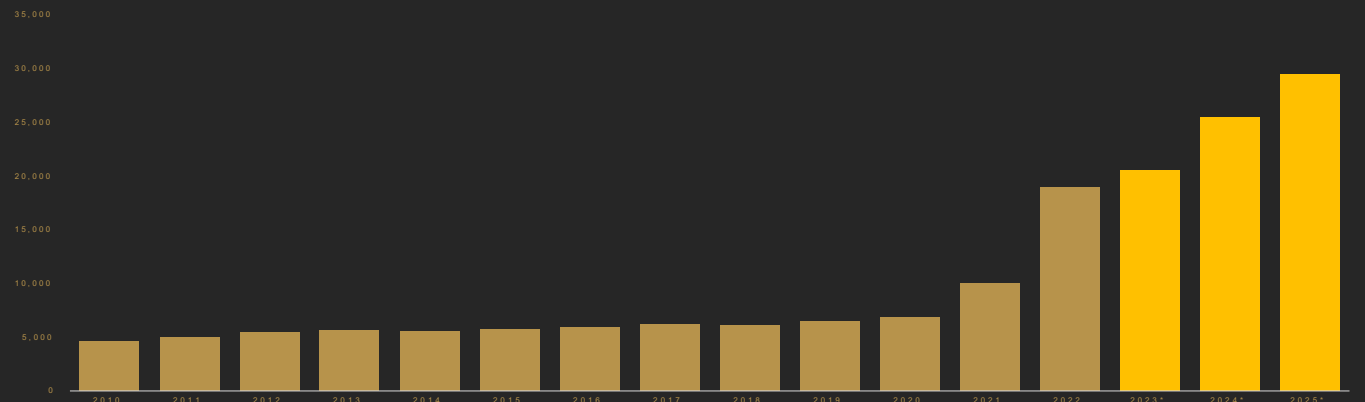


- ▶ **Mining-friendly and straightforward permitting**
- ▶ Mining is still a key employer within the country, employing between 15,000- 20,000 workers
- ▶ Mining was 5% of Guyana's GDP in 2022

## 2022 Fraser Institute Investment Attractiveness index: Guyana up 27.5 points



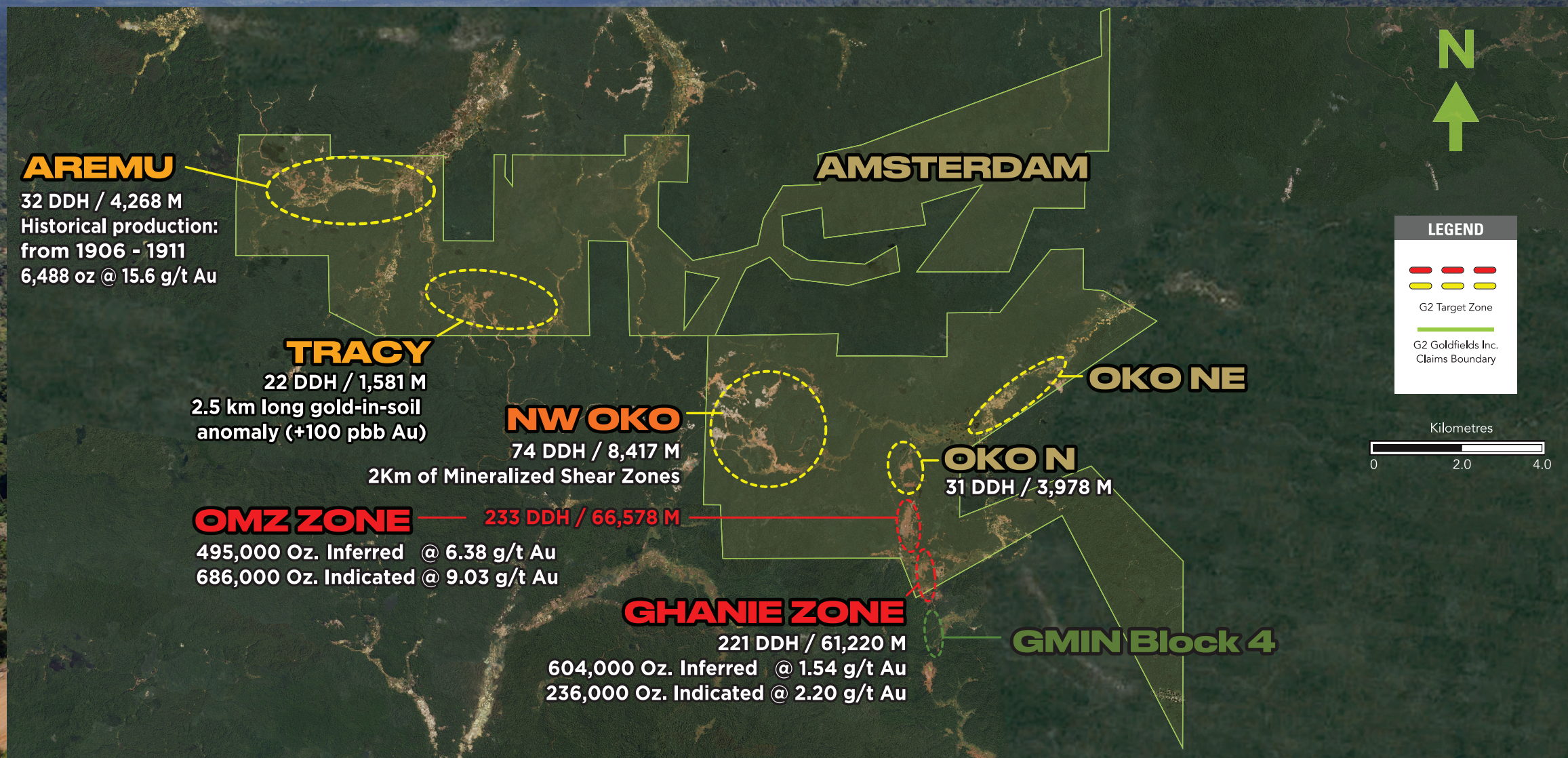
## World's Fastest Growing Economy: Guyana GDP (USD) per Capita



Source: World Bank, Statista







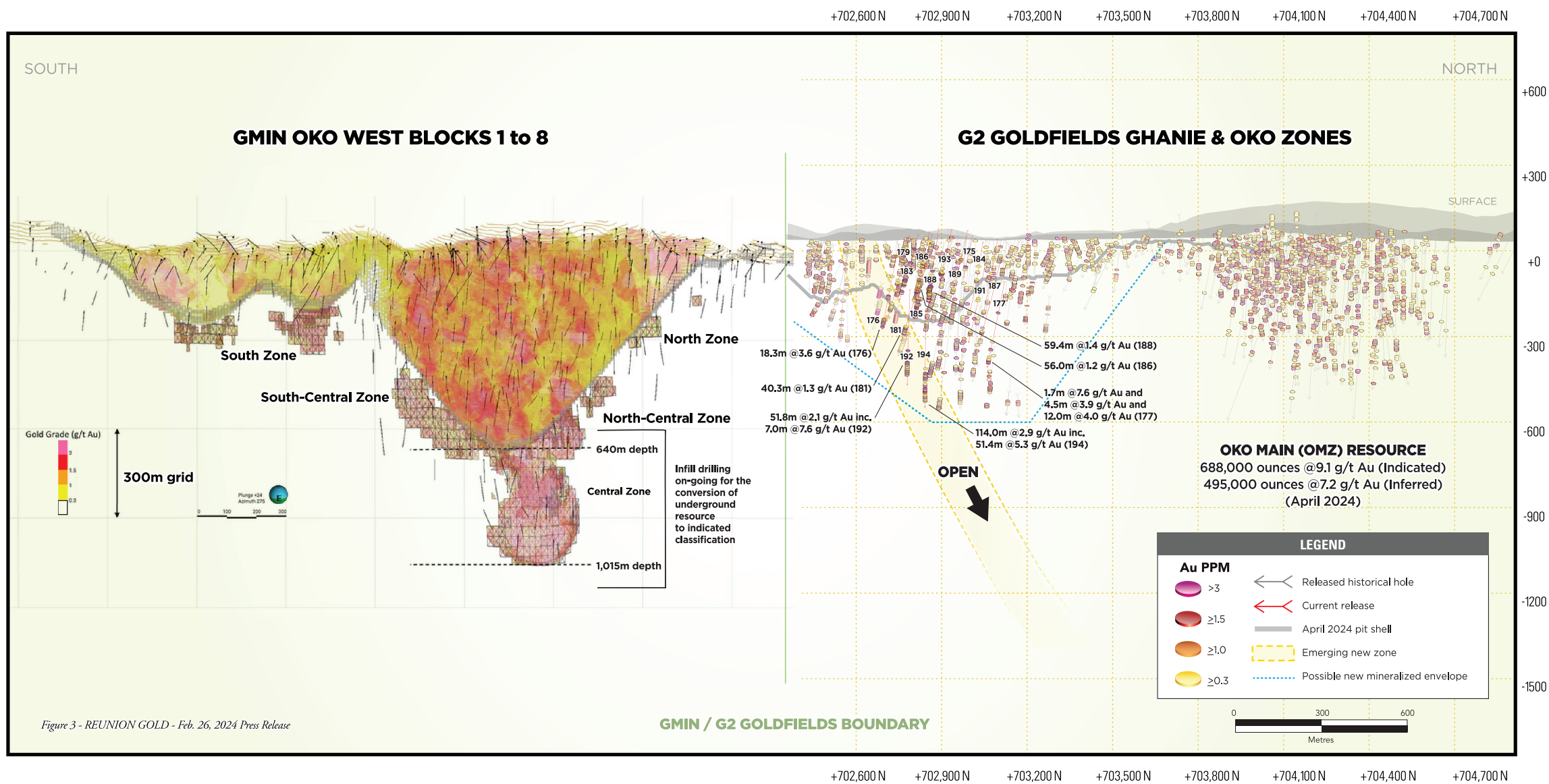
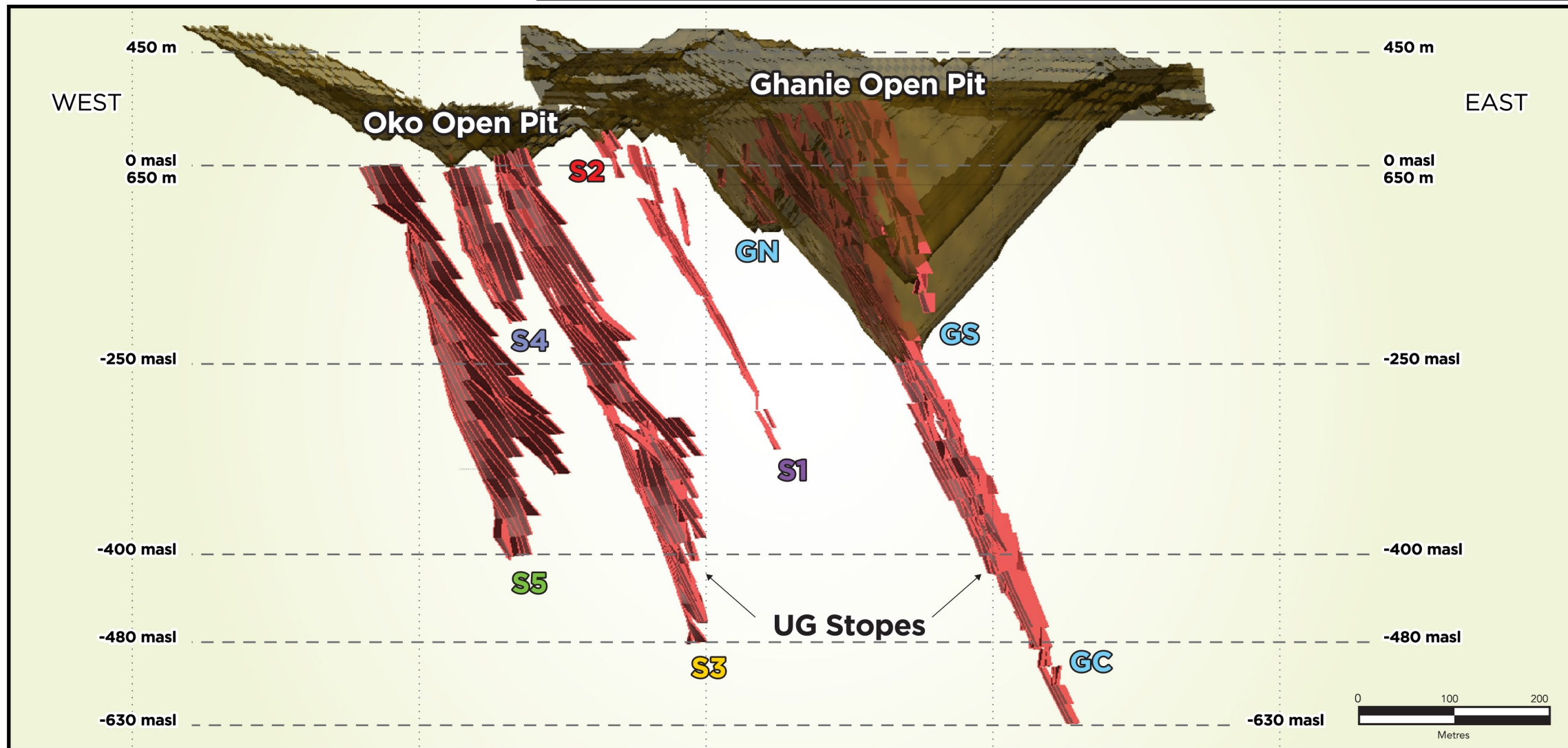


Figure 3 - REUNION GOLD - Feb. 26, 2024 Press Release

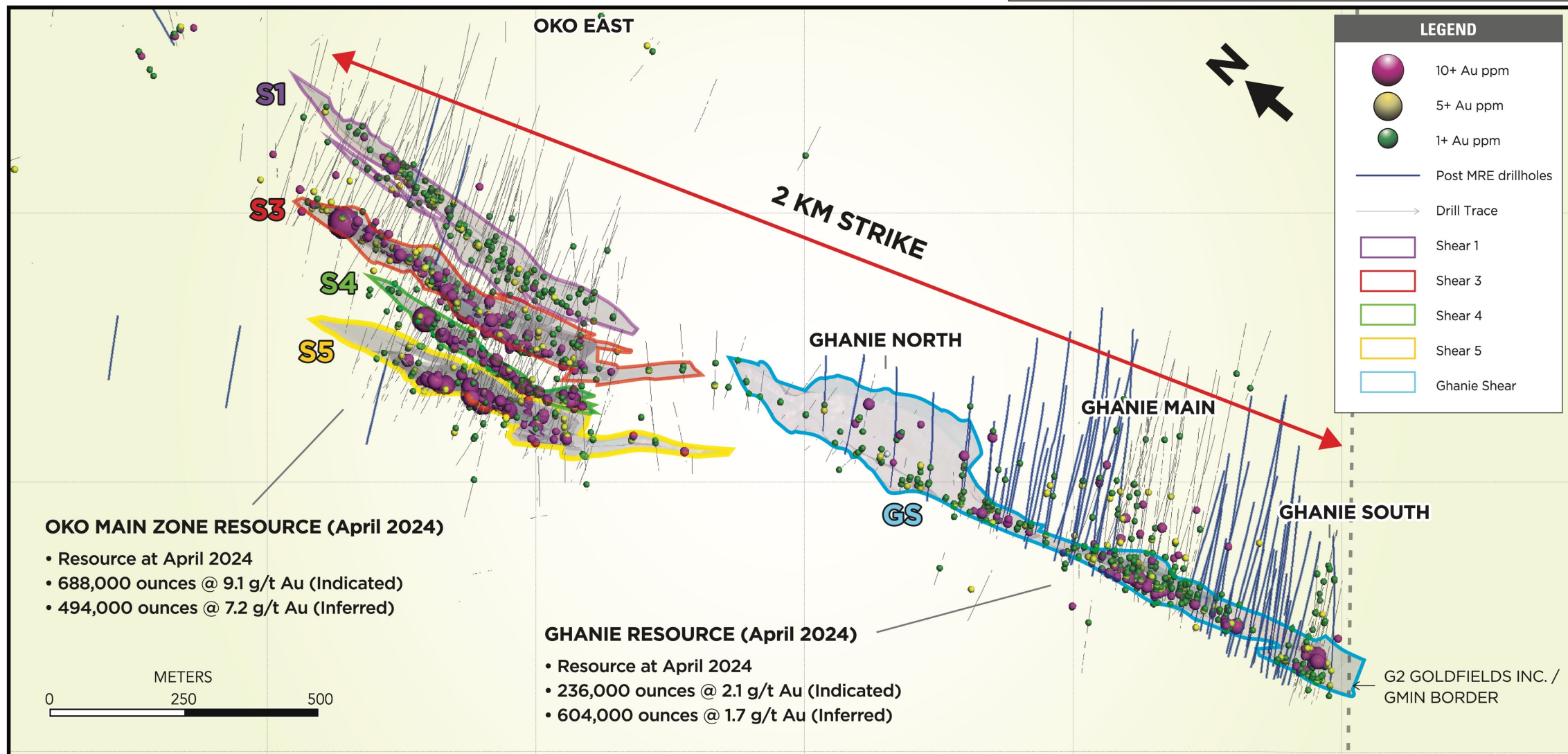
GMIN / G2 GOLDFIELDS BOUNDARY



## OKO &amp; GHANIE DESPOSITS SURFACE &amp; UNDERGROUND MINING CONSTRAINTS - APRIL 2024



## OKO AND GHANIE ZONES - SEPTEMBER 2024





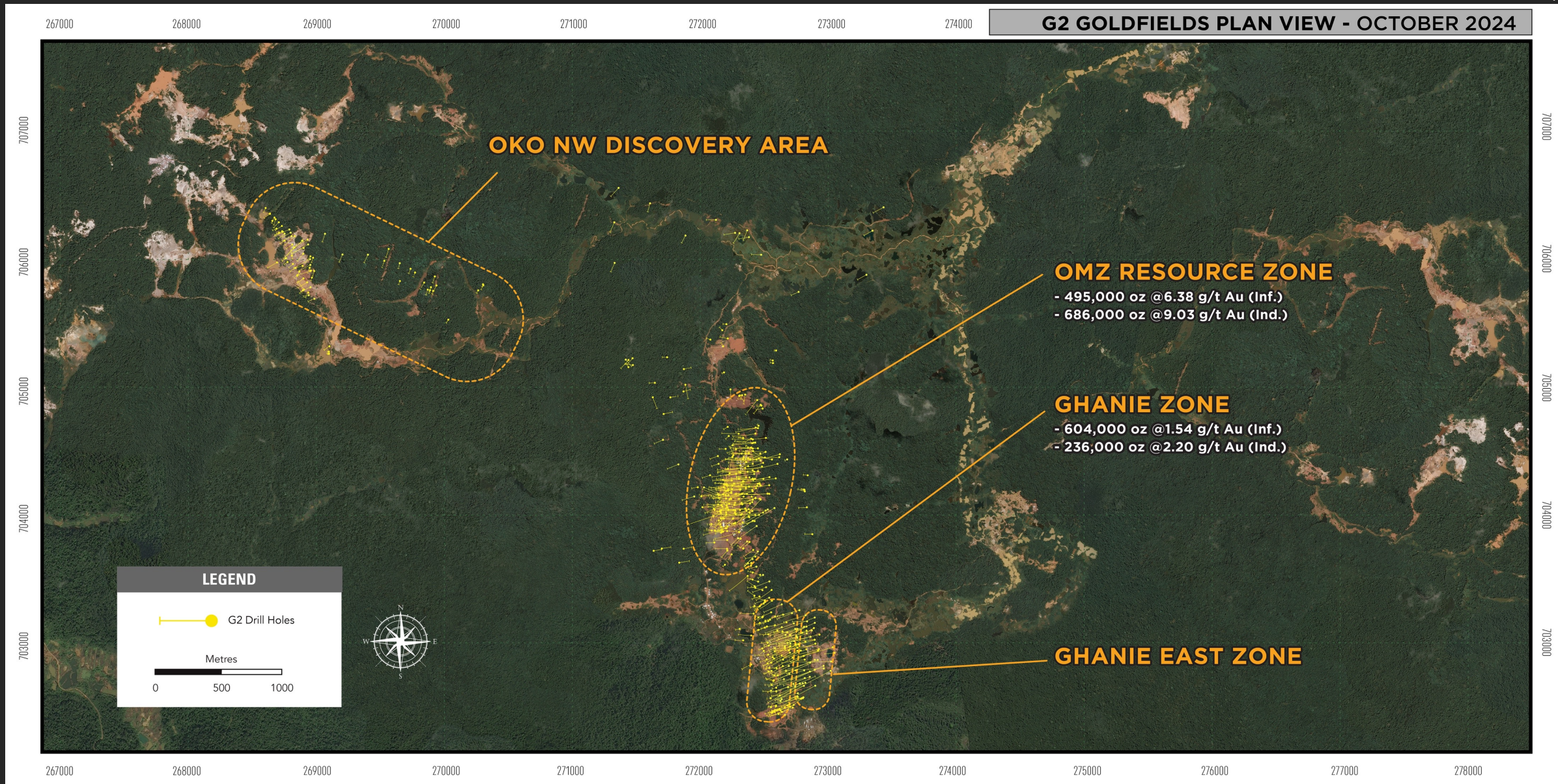
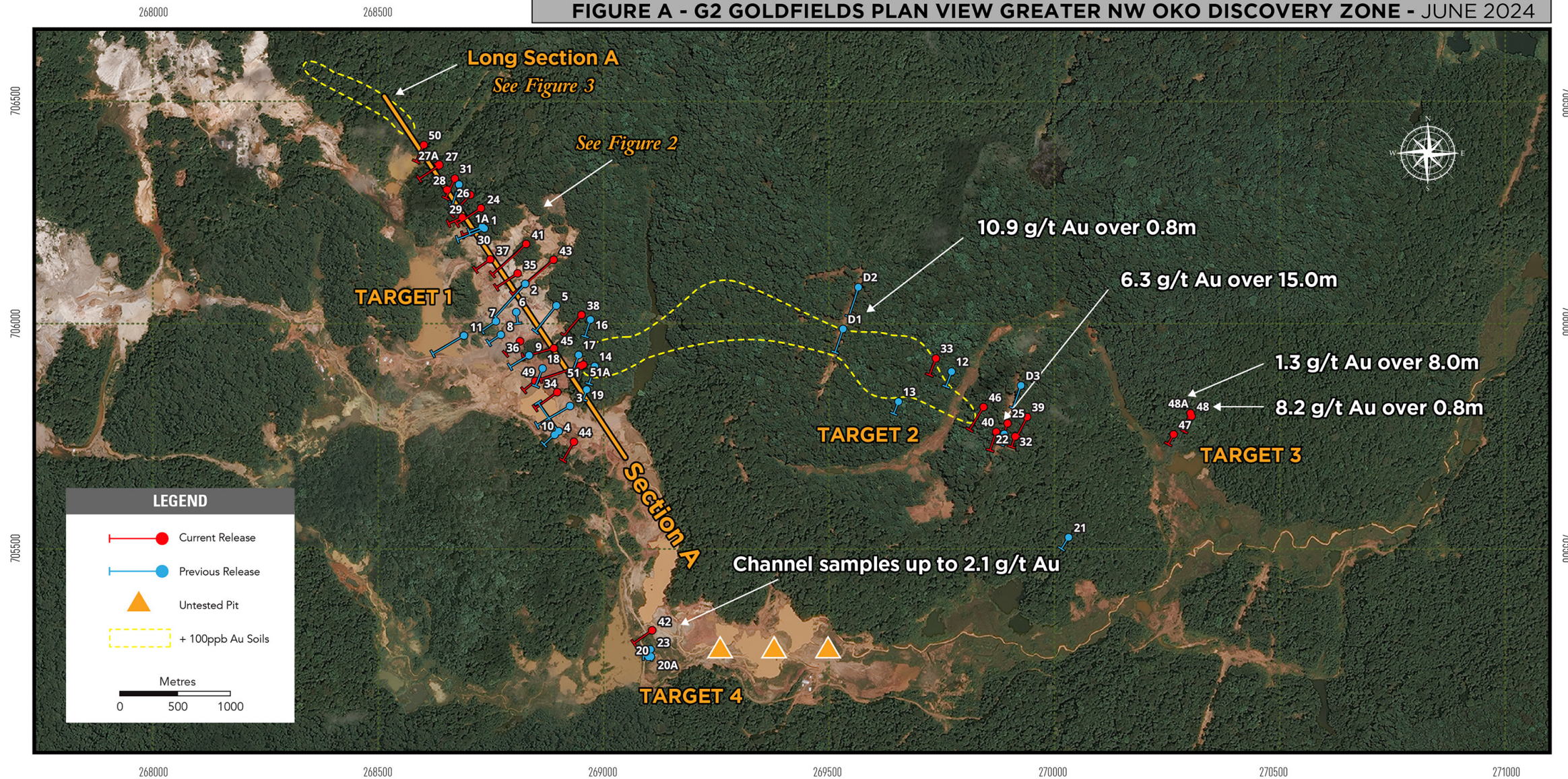
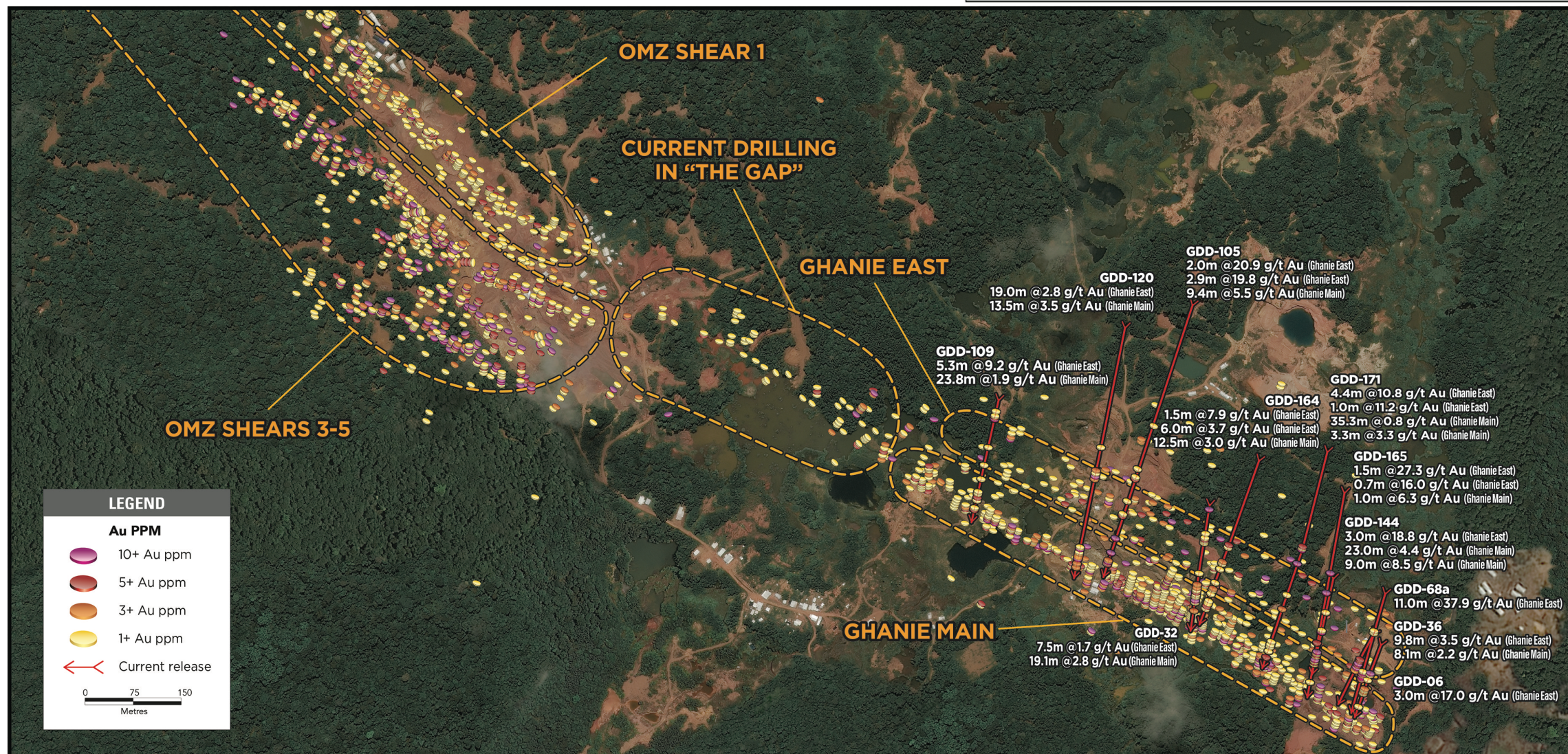


FIGURE A - G2 GOLDFIELDS PLAN VIEW GREATER NW OKO DISCOVERY ZONE - JUNE 2024



## OKO AND GHANIE OBLIQUE VIEW - OCTOBER 2024



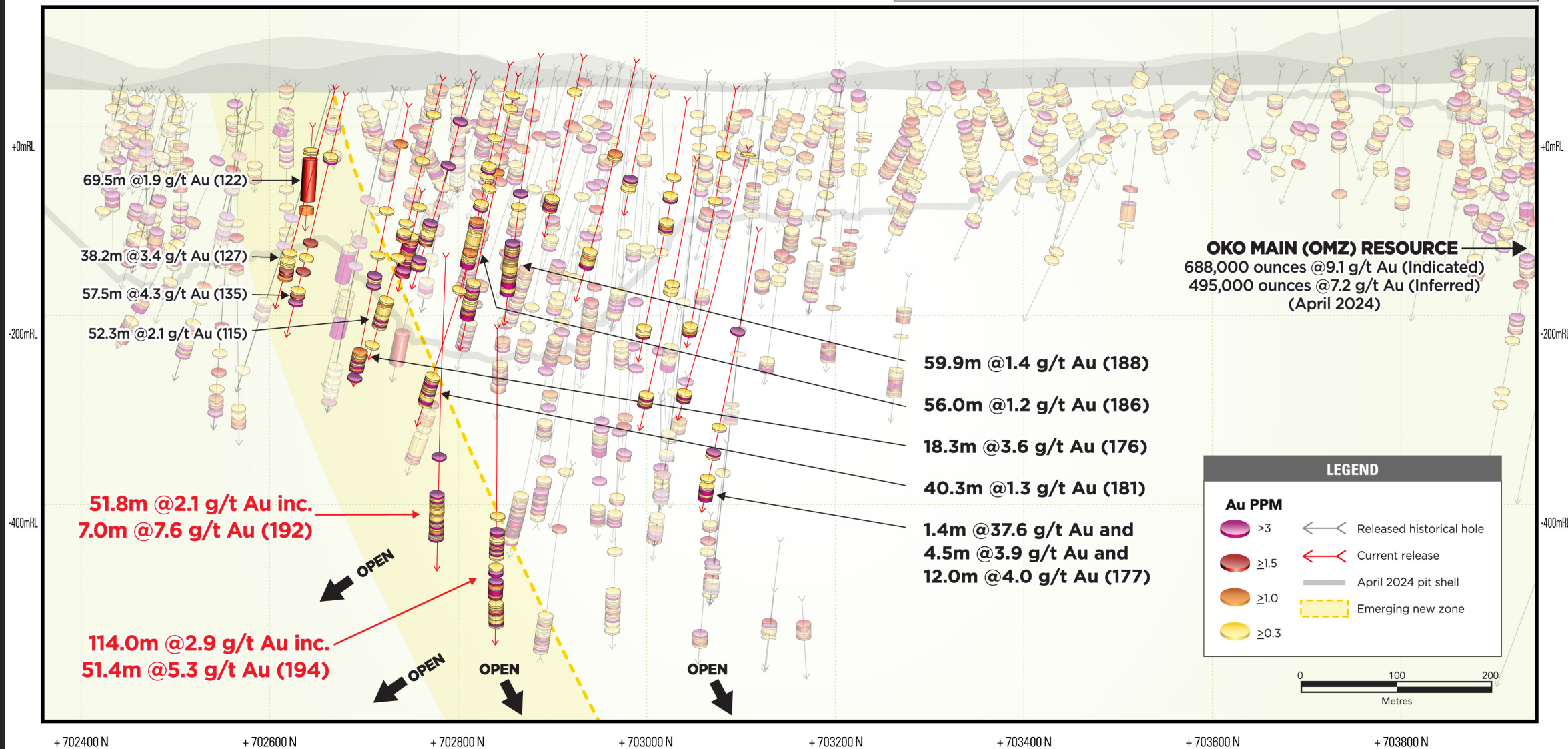
+ 702400 N

+ 702600 N

+ 702800 N

+ 703000 N

+ 703200 N

**GHANIE LONG SECTION LOOKING WEST - NOVEMBER 2024**

+ 702400 N

+ 702600 N

+ 702800 N

+ 703000 N

+ 703200 N

+ 703400 N

+ 703600 N

+ 703800 N



## NEAR-TERM CATALYSTS



### UPDATED MRE

Updated Mineral Resource Estimate targeted for Q1 2025

### STRATEGIC DRILLING

Connecting the high-grade OMZ with Ghanie to the South & continuing greenfields exploration

### GHANIE & NW OKO

Defining the Ghanie & NW OKO trends with follow up drilling & exploration

### NEW TARGETS

Advancing drill-stage targets along trend up to Aremu & reconnaissance of New Aremu



# Investment Proposition

18



## Growing/Defining Guyana's Highest Grade Gold Deposit



- ▶ Sixth highest-grade gold resource globally as compared to the top 10 highest-grade producing underground gold mines with a reserve base > 1 Moz Au

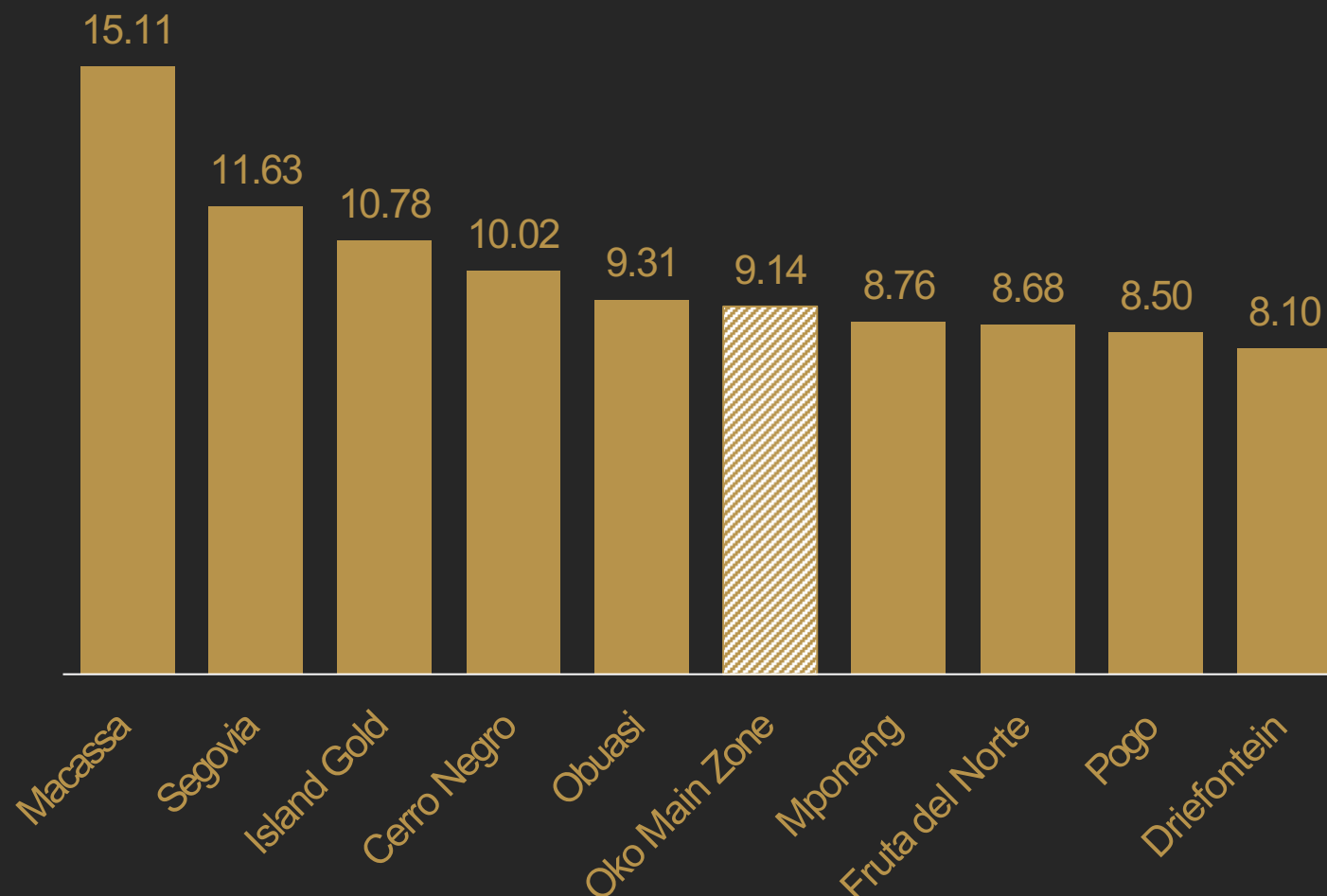


- ▶ Higher grade equals intrinsically more favorable economics:
  - Faster payback period
  - Lower milling Capex and Opex
  - Insulation from commodity price volatility



- ▶ Experienced management team:
  - Developed the Aurora Project to production within country
  - Past discoveries exceed 7 Moz Au
  - Raised over US\$400 million for past exploration and development projects

## G2 Goldfields Grade on a Notional Table Vs 10 Highest-Grade Producing Underground Gold Mines Globally with a Reserve of over 1 Moz Au\*



# Strategic Equity Stake by AngloGold Ashanti (NYSE:AU)

19



Currently holds  
35,948,965 shares  
representing 15.03%  
of the issued and  
outstanding shares



## About AngloGold Ashanti

- ▶ Sixth biggest gold producer globally
- ▶ Produced 2.742 Moz of gold, and employed an average of 32,594 people (including contractors) in 2022
- ▶ Listed on the Johannesburg, New York, Australia and Ghana stock exchanges
- ▶ 10.03-billion-dollar market capitalization
- ▶ Geographically diverse shareholders including the world's largest financial institutions
- ▶ Included in the JSE Top 40 Index, the S&P Global CSA, the FTSE/JSE Responsible Investment Index Series (the FTSE4Good Index), the Responsible Mining Index and the Bloomberg 2021 Gender-Equality Index



# G2 Goldfields' ESG Approach



## Environmental

- ▶ Taking steps to minimize impact, steward the natural environment of the interior and preserve ecosystems
- ▶ Adherence to the GGMC's monitoring guidelines
- ▶ Implementation of a waste separation system on site
- ▶ Instituting measures for secure transport and storage of chemical materials on site
- ▶ Focus on water management
- ▶ Data collection in accordance with the Environmental Baseline Study (EMC Guyana)
- ▶ Exploring carbon offsetting through reforestation



## Social

- ▶ 100% Guyanese on-site geological and field teams
- ▶ History of hiring and training personnel from surrounding Missions
- ▶ In-country drilling partners – prioritizing domestic procurement practices
- ▶ Maintaining a safe & healthy workplace environment with occupational training
- ▶ On-site medics providing malaria testing & treatment to the surrounding area
- ▶ Advancing opportunities for building long-lasting socio-economic value within local Amerindian communities



## Governance

- ▶ Aligned to the IFC Equator Principles framework for management best practices
- ▶ Promoting and maintaining positive relationships with local government agencies and institutions
- ▶ The Company has instituted disclosure and business ethics protocols including a Whistleblower Policy
- ▶ Fair, equitable employment and compensation practices
- ▶ Strong commitment to transparency in reporting
- ▶ Fostering a culture of open communication and trust





**Investor Relations**  
[investors@g2goldfields.com](mailto:investors@g2goldfields.com)

**News & Media**  
[news@g2goldfields.com](mailto:news@g2goldfields.com)