



EXPANDING HIGH GRADE

SEPTEMBER 2021



FORWARD LOOKING STATEMENTS

Forward-looking statements relate to future events or the anticipated performance of G2 Goldfields Inc. (the "Company") and reflect management's expectations or beliefs regarding such future events and anticipated performance. In certain cases, forward-looking statements can be identified by the use of words such as "plans", "expects", "is expected", "budget", "scheduled", "estimates", "forecasts", "intends", "anticipates" or "believes", or variations of such words and phrases or statements that certain actions, events or results "may", "could", "would", "might" or "will be taken", "occur" or "be achieved", or the negative of these words or comparable terminology. By their very nature forward-looking statements involve known and unknown risks, uncertainties and other factors which may cause the actual performance of the Company to be materially different from any anticipated performance expressed or implied by the forward-looking statements. Important factors that could cause actual results to differ from these forward-looking statements include risks related to failure to define mineral resources, to convert estimated mineral resources to reserves, the grade and recovery of ore which is mined varying from estimates, future prices of gold and other commodities, capital and operating costs varying significantly from estimates, political risks, uncertainties relating to the availability and costs and availability of financing needed in the future, changes in equity markets, inflation, changes in exchange rates, fluctuations in commodity prices, delays in the development of projects, conclusions of economic evaluations, changes in project parameters as plans continue to be refined, uninsured risks and other risks involved in the mineral exploration and development industry. Although the Company has attempted to identify important factors that could cause actual performance to differ materially from that described in forward-looking statements, there may be other factors that cause its performance not to be as anticipated. There can be no assurance that forward-looking statements will prove to be accurate, as actual results and future events could differ materially from those anticipated in such statements. Accordingly, readers should not place undue reliance on forward-looking statements. These forward-looking statements are made as of the date of this presentation and the Company does not intend, and does not assume any obligation, to update these forward-looking statements. Dan Noone, CEO and Director of G2 Goldfields Inc., is the Qualified Person, within the meaning of NI 43-101 and has reviewed the technical content of this presentation.

C O R P O R A T E S H A R E C A P I T A L



C A P I T A L S T R U C T U R E A S O F S E P T E M B E R 7 , 2 0 2 1

Common Shares Outstanding	130,366,754
Options & RSUs	10,278,750
Warrants	7,388,134
Shares Fully diluted	148,033,638
Fully Diluted Insider Shareholding	48,936,512
Cash Position (September 07, 2021)	C\$2.2 Million
In-the-money warrants & options (due Sep / Oct 2021)	C\$0.8 Million



DISCOVERY TEAM

CHAIRMAN Patrick Sheridan

CHIEF EXECUTIVE OFFICER Dan Noone

GUYANA COUNTRY MANAGER Violet Smith

VP EXPLORATION GUIANA SHIELD Boaz Wade

C L E A R B U S I N E S S P L A N



- **Guiana Shield:** Target areas that can host Tier 1 Assets



- **Aremu – Oko District:** 21,946 acres
- **Puruni District:** 16,700 acres



- **Aremu & Peters Mines:** Historic mines
- **Oko & Jubilee Mines:** Current operations



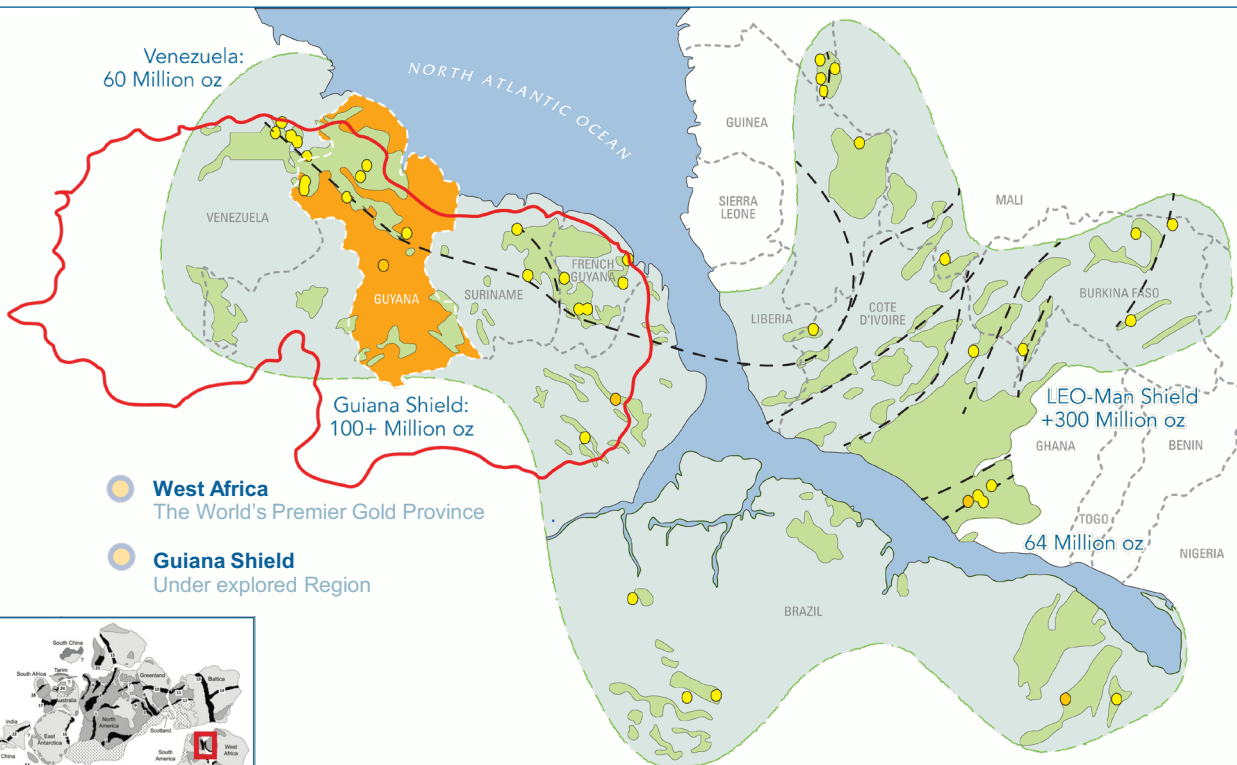
- **Guyana**



- **Oko Main Zone**

A,B,C,& D
Interest from Major Gold Companies (Barrick, Newmont, Zijin) & competitive M&A market (Gold X & Gran Colombia)

THE GUIANA SHIELD : WHY GUYANA ?



Guiana Shield:

The Western Half of The World's Premier Paleoproterozoic Gold Province

- Underexplored
- Modern Discoveries of Tier 1 Assets
- Innumerable small scale mining activities

G2 Goldfields Inc. projects are located in Guyana - the heart of the Guiana Shield.

Guyana

- Fastest growing economy in Sth. America
- English Speaking
- British Law
- Mining Friendly

TARGET MODEL

Obuasi

- 70 Million Oz Au District
- Paleoproterozoic: 2 Billion years ago
- Mineralisation on Basin Margins
- Host Rock – Carbonaceous Sediments
- Intrusive rocks nearby

PALEOPROTEROZOIC (RHYACIAN) GOLD DEPOSITS, WEST AFRICA

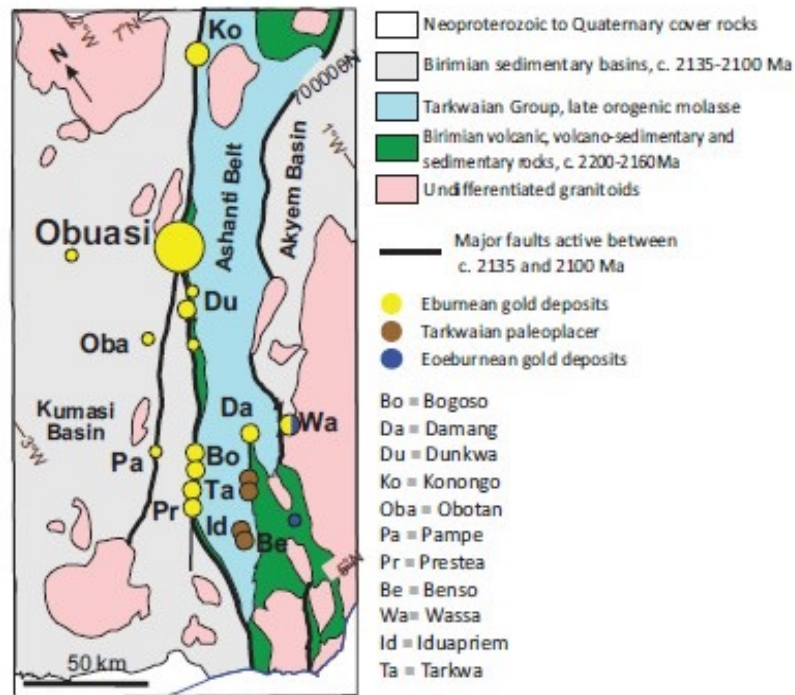
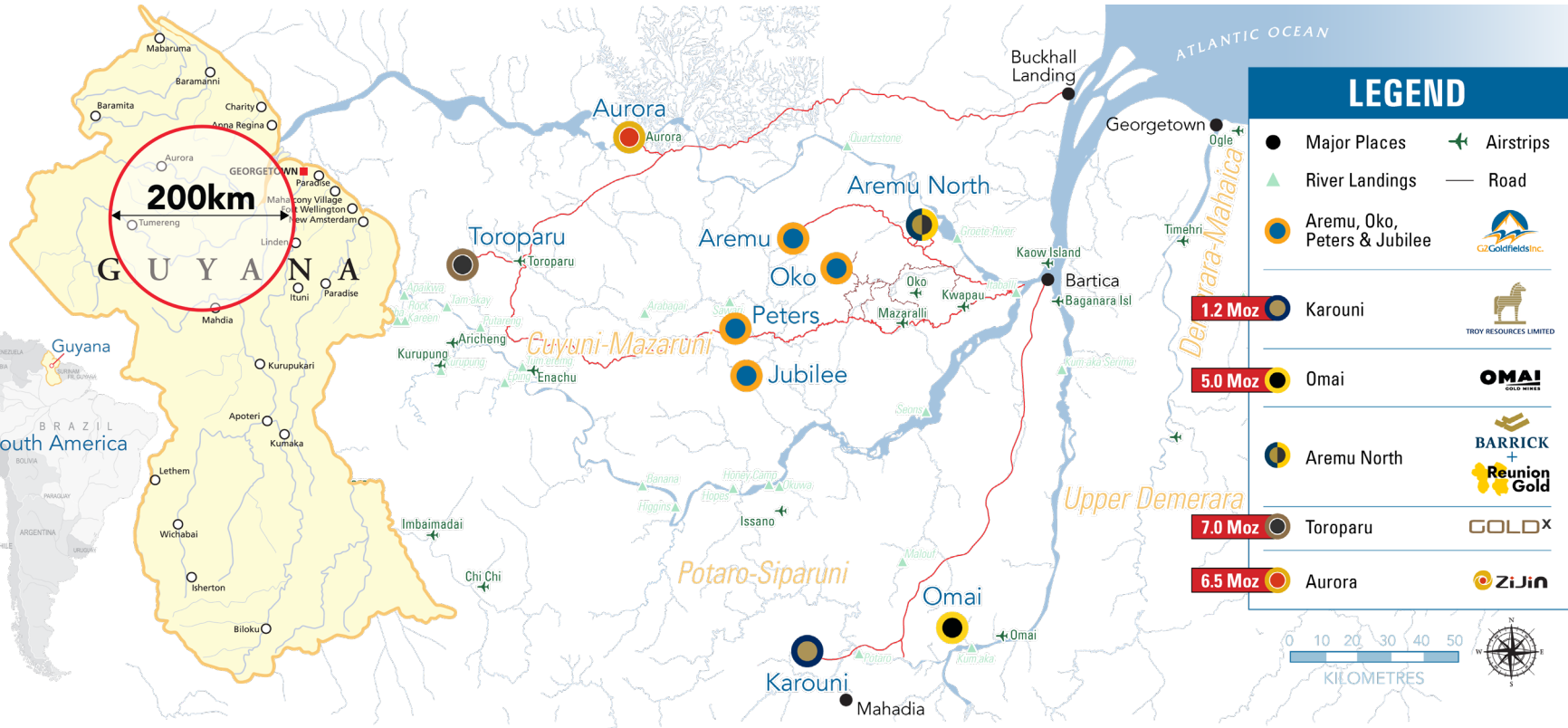


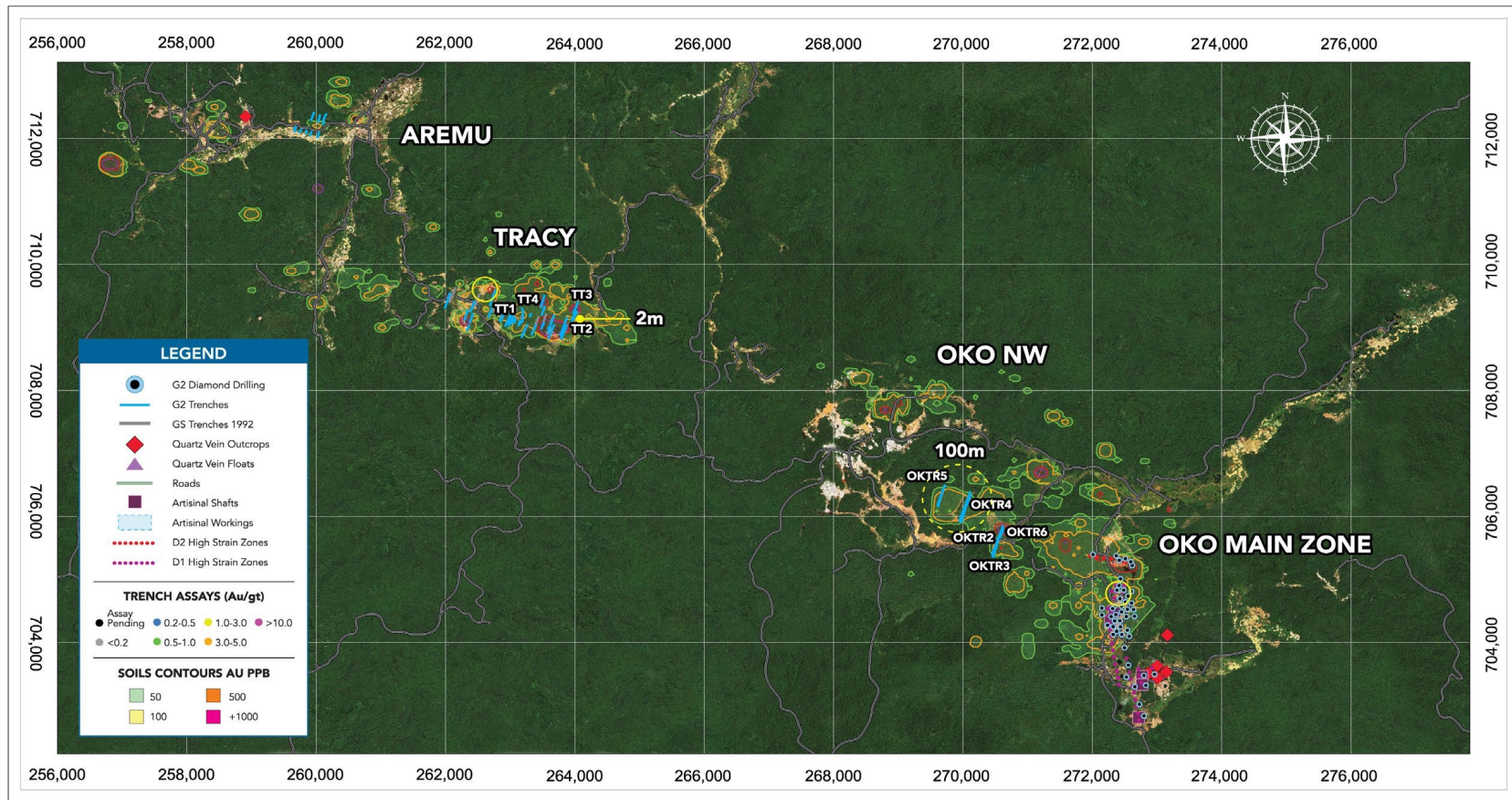
Fig. 2. Summary geologic map showing the regional geologic setting of Obuasi and other gold deposits in southern Ghana (modified after Oliver et al., 2020).

Operating in one of the world's great gold provinces

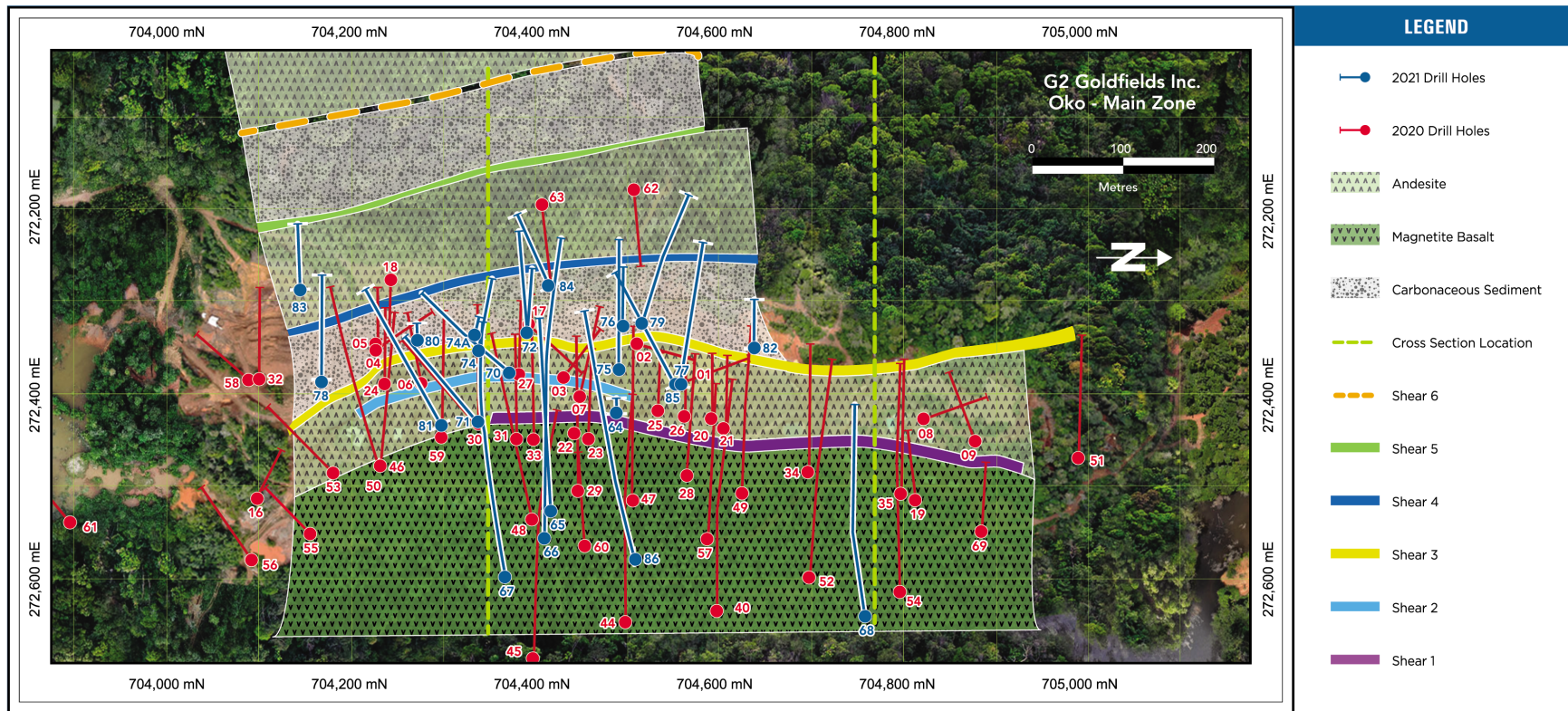
Led by a team that has discovered 9 Million ounces to date



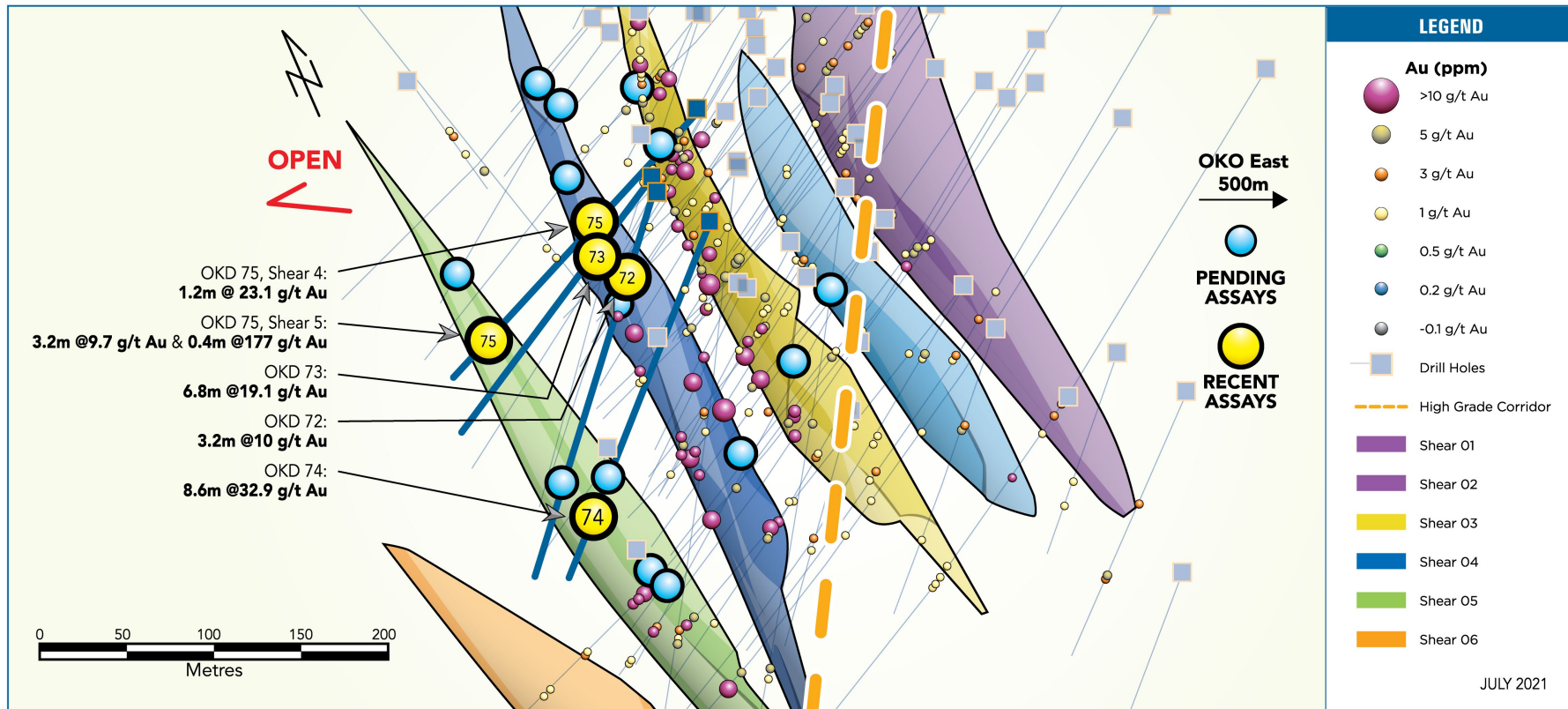
AREMU OKO DISTRICT – 17 km long



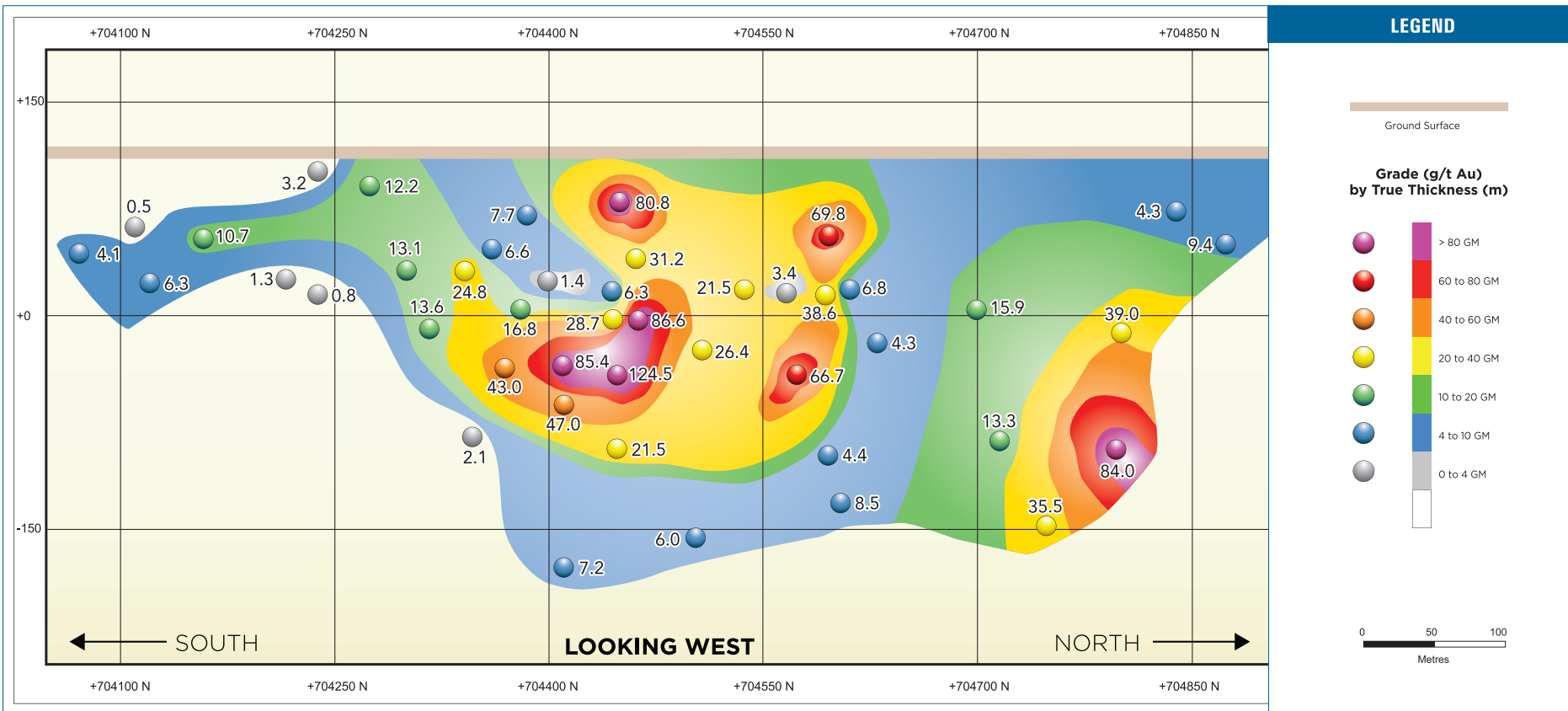
OKO MAIN ZONE



OKO PROJECT - DRILLING AND MODEL



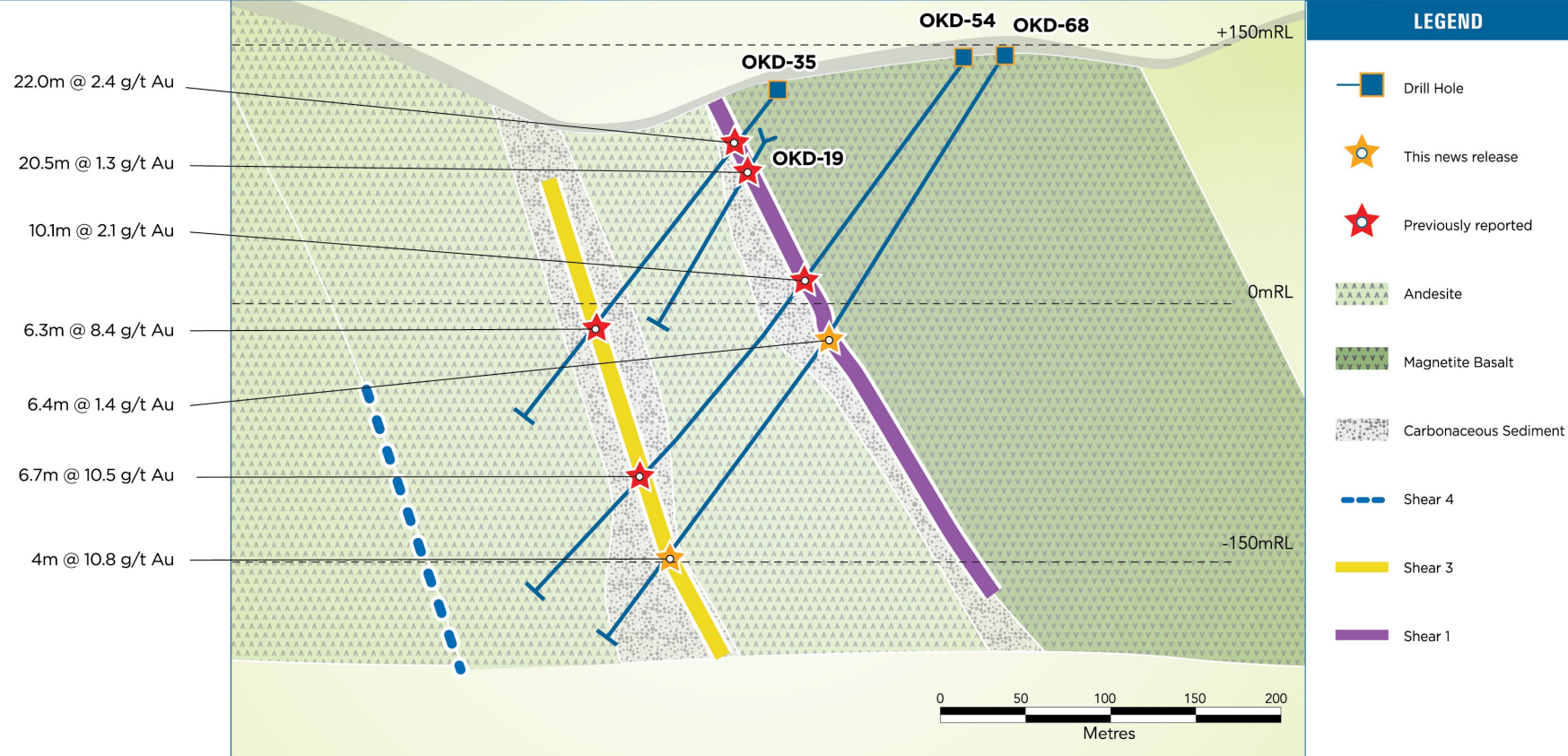
OKO MAIN ZONE: SHEAR 3 LONG SECTION: GRADE x TRUE THICKNESS CONTOURS



WEST

OKO HOLES 19 / 54 / 35 and 68

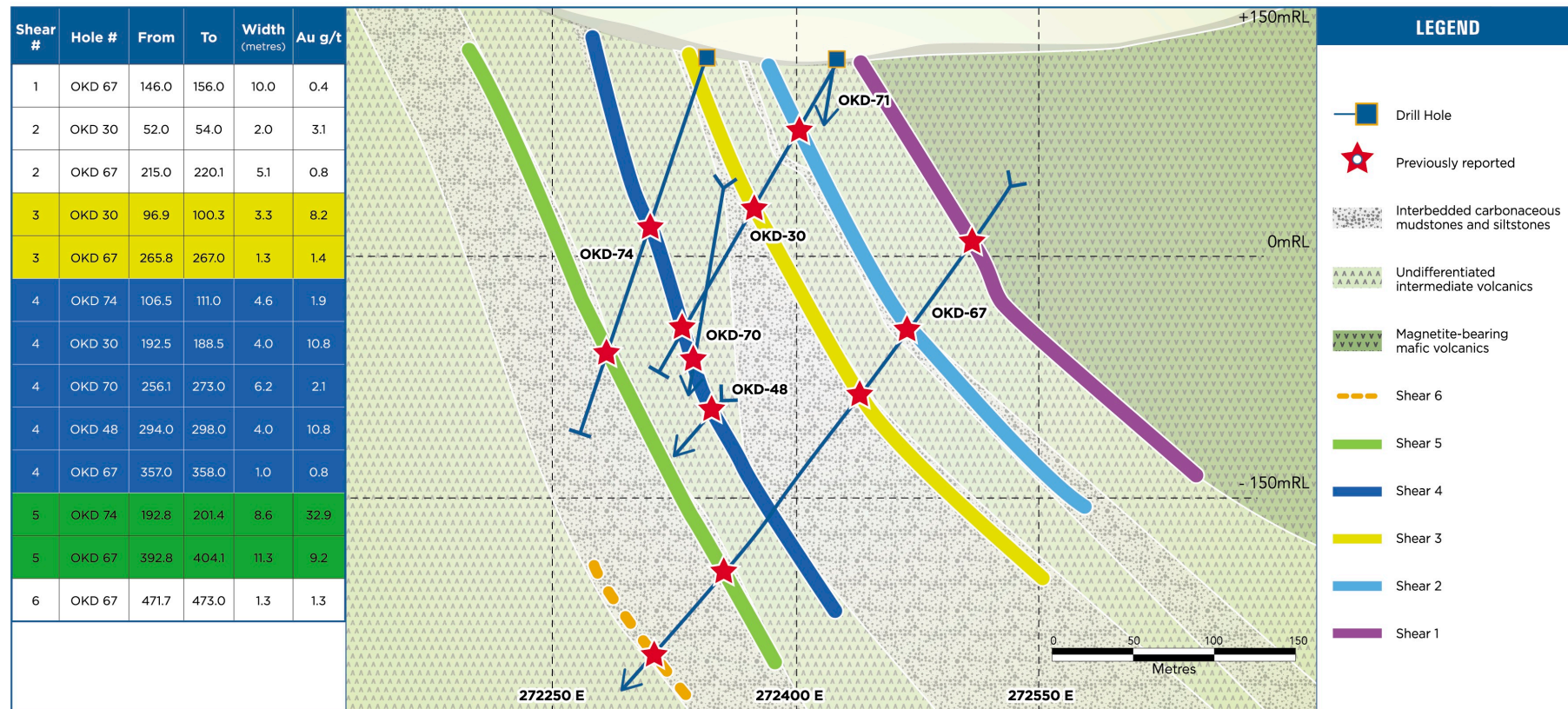
EAST



WEST

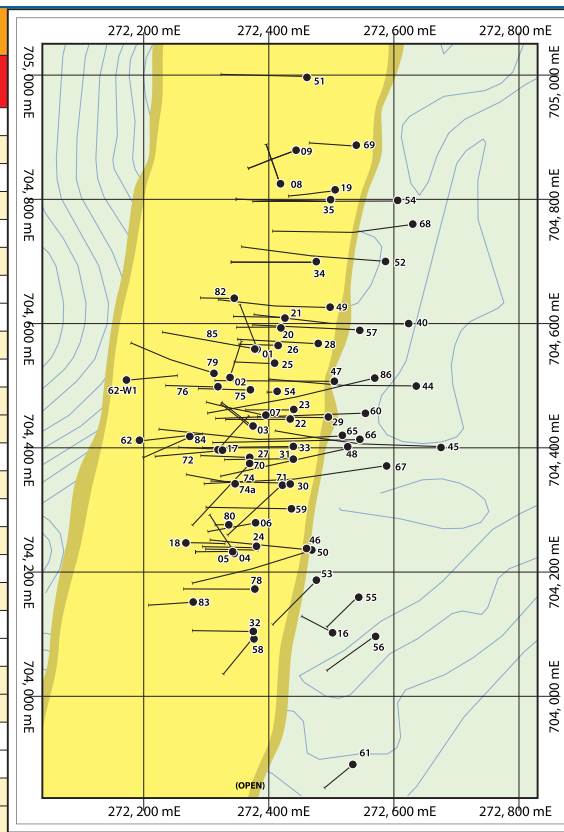
CROSS SECTION OF OKD-74 (Looking N, section width 25m)

EAST



OKO MAIN ZONE

CONSISTENT HIGH GRADE GOLD		
OKD Hole Number	Width in Meters	g/t Au
1	6.0	15.0
2	3.0	4.6
3	12.0	13.8
4	1.8	6.2
5	8.2	9.1
6	2.7	6.5
7	1.7	30.8
7	2.7	15.8
8	1.5	5.2
9	2.3	7.8
17	1.4	8.0
17	4.1	12.9
19	1.5	11.5
20	11.7	7.2
22	2.5	11.8
23	2.8	14.8
24	2.4	116.6
25	3.7	7.2
27	1.0	8.0
27	4.0	19.5
28	6.9	5.1
28	2.2	30.8
29	2.7	49.0
29	3.2	11.5
30	1.8	14.9
30	4.0	10.8



CONSISTENT HIGH GRADE GOLD		
OKD Hole Number	Width in Meters	g/t Au
35	4.0	10.2
46	2.5	17.8
46	2.5	4.7
46	0.7	33.7
47	0.8	10.6
47	4.4	9.5
48	2.1	21.2
48	1.6	26.1
54	3.2	8.4
54	6.7	10.5
59	4.0	8.9
60	2.6	8.6
60	1.4	13.8
65	5.0	19.0
65	6.5	12.9
66	1.7	33.3
66	6.5	15.3
67	11.3	9.2
68	3.8	10.2
72	3.2	10.0
73	6.8	19.0
74	8.6	32.9
75	3.2	10.0
75	0.4	177.0

Widths reported are drill indicated core length. True widths are estimated at 64% to 80% of core lengths for holes OKD-55 to OKD-59. Average grades are calculated with un-capped gold assays, as insufficient drilling has been completed to determine capping levels for higher grade intercepts.

All holes are drilled at an angle of 60 degrees to the horizontal.

OKO VISIBLE GOLD





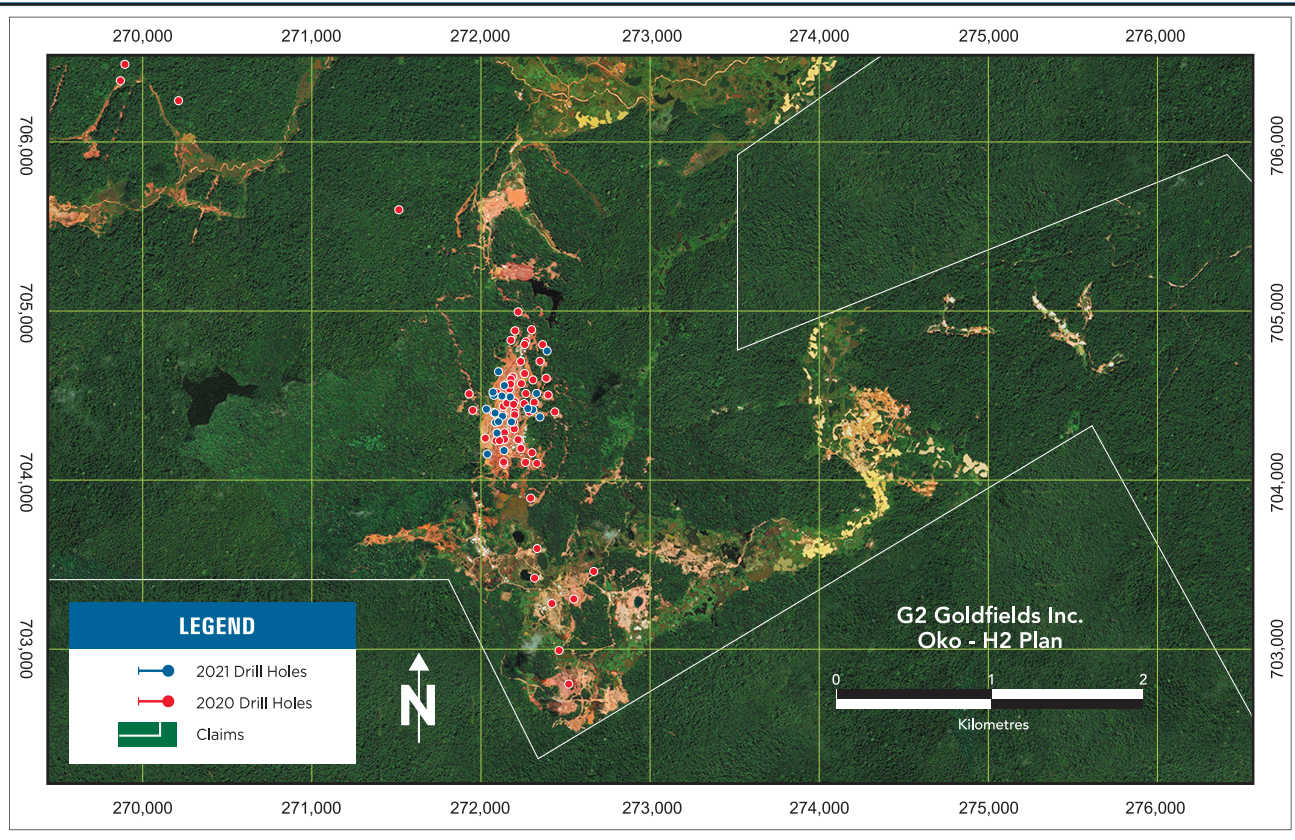
OKO H2 PLAN

Expand Oko Main Zone Mineralization

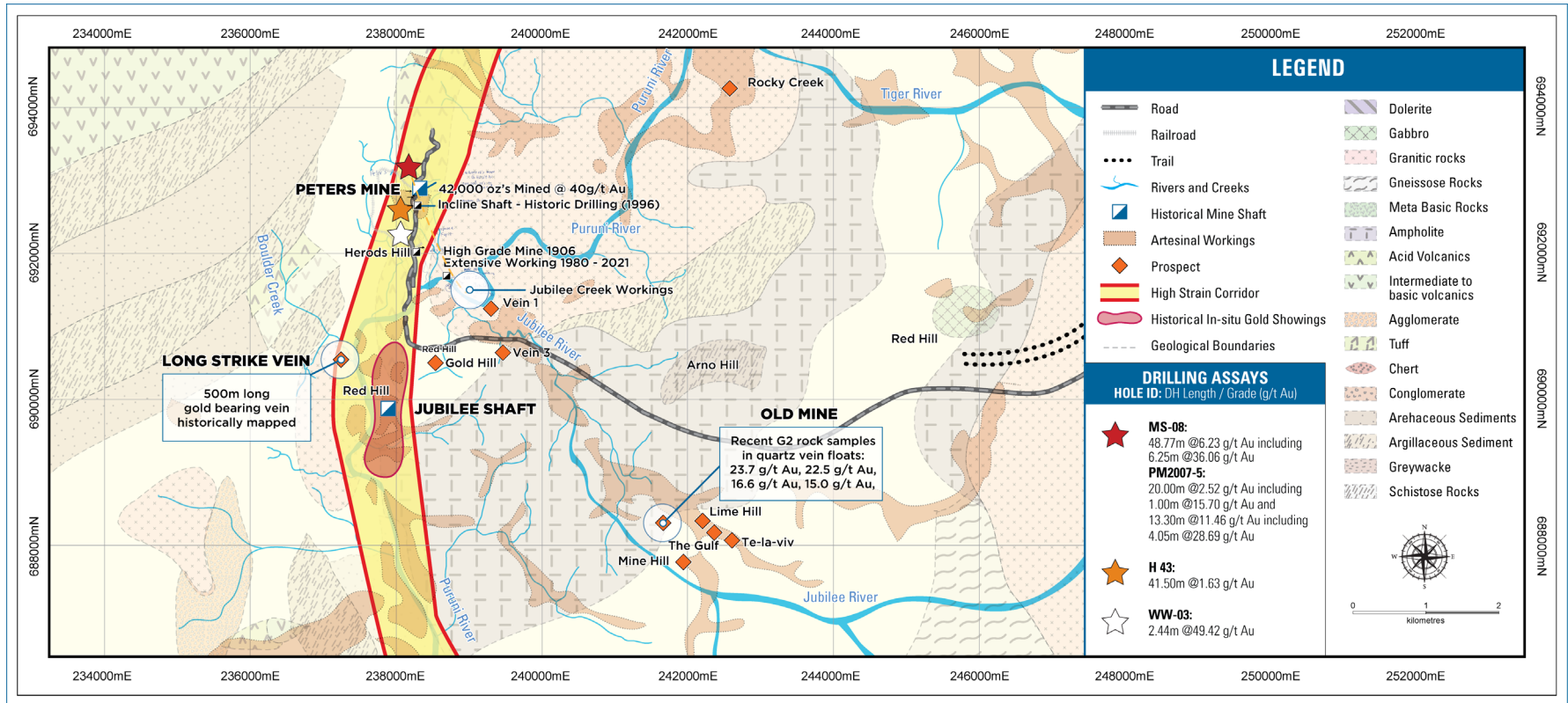
- Add a Second Drill Rig
- Continue “Step Out” Drilling
- Test for more parallel shear zones

Explore Targets Adjacent to Oko Main Zone

- Map extensive mine workings
- Develop geological and mineralization models
- Define Targets – Drill Test Them



PURUNI DISTRICT: PETERS & JUBILEE



PURUNI DISTRICT

PETERS MINE

- Guyana's first gold mine in 1905
- Highest-grade historic mine in Guyana
- Historic USGS resource of 160K oz Au at 1 oz. / ton
- Produced 41,915 Oz 1905-1910



PURUNI DISTRICT

JUBILEE MINE

- Operational open pit
- Undrilled asset
- Historic workings: one vertical shaft
- High grade sampling in Main Mine Area
- Option to earn 100% interest



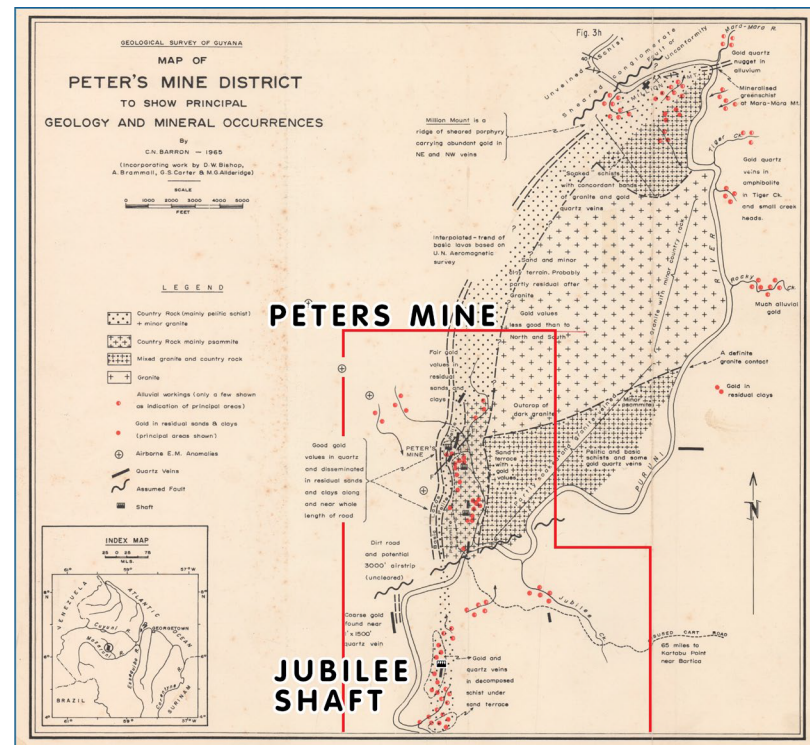
PURUNI DISTRICT WORK PLAN

J U B I L E E M I N E

- Maiden drill program – 6 holes
- Targeting high grade vein system
- Vein material up to 23 g/t Au

P E T E R S M I N E

- 6-hole drill program
- Designed to test Geological and Mineralization Model
- SW plunging shoot containing High Grade flat lodes
- Plan to test mineralization to 500m
- Mapping & sampling of extensive workings
- Develop district Mineralization Model
- Generate drill targets



VALUE PROPOSITION

Existing property portfolio shows considerable potential for significant gold discoveries

- ✓ Heart of premier gold district
- ✓ Strong property portfolio
- ✓ Best in-district discovery team
- ✓ Management invested + \$5 Million to date



COMPETITOR ACTIVITY

Company	Project	Activity	Mkt Cap US\$ Million
• Barrick	Aremu Nth/Karouni	Proposed Drill Program Aremu Nth	45,000
• Zijin	Aurora Mine	Mine Lease Exploration	40,000
• Gran Columbia	Toroparu	Takeover of Gold X	350
• Reunion	Oko West	11,000m Drill Program	35
• Omai	Omai Mine	5,000m Drill Program	28
• Gold Source	Eagle Mountain	PEA	39
• Tajiri Resources	Epieus	Mapping, Trenching & Sampling	7
• Golden Shield	Marudi / Arakaka	RTO of Goldblock Capital	
• G2 Goldfields	Oko Discovery	10,000 meter drill program	65



MISSION

Striving for operational excellence in pursuit of large high-grade gold deposits in the Guiana Shield.

VISION

Responsible mineral exploration as a catalyst for transformative shared economic and social value in regions where we operate.

VALUES

The G2 commitment to people and planet drives our determination to champion socially and environmentally conscious mineral resource development in Guyana.

C O N T A C T

C O R P O R A T E H E A D O F F I C E

141 Adelaide Street West
Suite 1101
Toronto, ON., Canada
M5H 3L5

Dan Noone, **CEO**

+1 416.628.5904

d.noone@g2goldfields.com

Christopher Hough, **Investor Relations**

+1 416.628.5904 ext. 1108

christopher.hough@g2goldfields.com

News & Media

news@g2goldfields.com

TSXV: GTWO

OTCQX: GUYGF



[@G2Goldfields](https://twitter.com/G2Goldfields)

